

CEMINTEL®

CEMENT INTELLIGENCE

AIR BARRIER RIGID AIR BARRIER

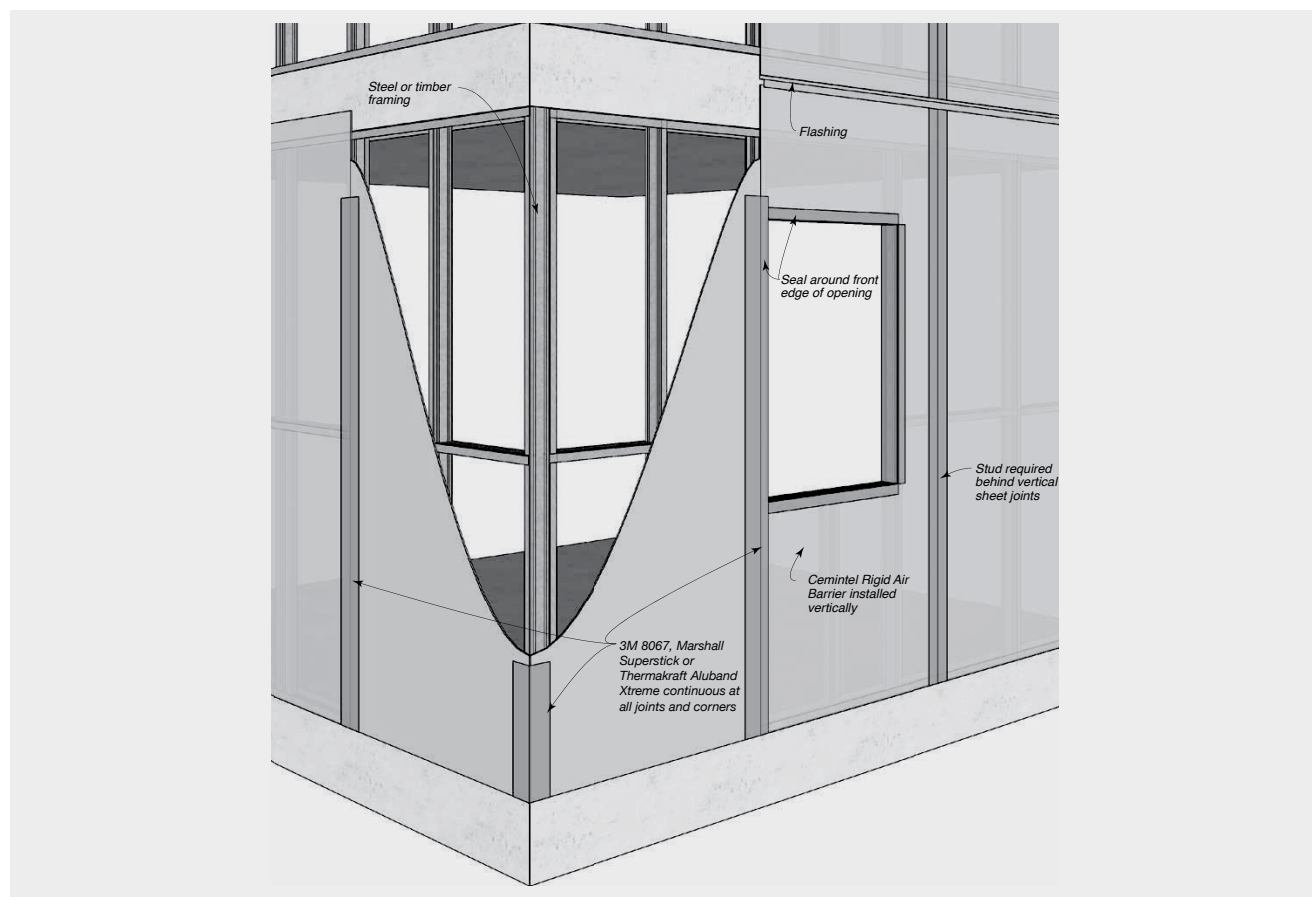


This product is a 6mm, square edged fibre cement panel that is sealed on the face and edges using CeminSeal® waterblock technology.

Air barriers are an integral component of a pressure equalised façade system. Pressure equalised systems

consist of a cladding or rain screen installed with a ventilated cavity and form an effective method of weatherproofing buildings. For ventilated cavity system installations where wind loads exceed 1.5kPa, Cemintel® recommends that a Rigid Air Barrier™ be used instead of wall wrap.

System Overview



Cemintel Code	Thickness (mm)	Width (mm)	Length (mm)	Mass (Nominal)	Panels per pack
170076	6	1200	3000	9.4kg/m ²	30
452432	6	1200	2450	9.4kg/m ²	30

Note: Rigid Air Barrier™ can be made to order. Minimum order quantities and lead times apply. Refer to Cemintel® for more information.

CEMINTEL[®]

CEMENT INTELLIGENCE



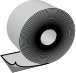



AIR BARRIER RIGID AIR BARRIER – COMPONENTS & ACCESSORIES



Cemintel Rigid Air Barrier

Product	Width (mm)	Length (mm)	Thickness (mm)
Cemintel Rigid Air Barrier	1200	3000	6

Product/Accessories/Tools for Installing Cemintel Rigid Air Barrier

Other Accessories	Description	Size	Quantity
NAILS (FOR TIMBER)			
	Nails for fixing Cemintel Rigid Air Barrier to timber framing 40 x 2.8 flat head hot dip galvanised or stainless steel ring shank	2.8 x 40mm	Supplied by others
SCREWS (FOR STEEL)			
	Screws for fixing Cemintel Rigid Air Barrier to steel framing 40 x 10g button head	10g x 40mm	Supplied by others
	3M 8067, Marshall Superstick or Thermakraft Aluband Xtreme - Used to seal vertical and horizontal joints around openings, corners and flashings.	75mm wide (For sheet joints) 150mm wide (For window and door openings)	Supplied by others
	Sealant - Sealant is used to seal the Rigid Air Barrier to the framing and parts of the structure to form an air seal. This sealant is compatible with many materials; including steel, concrete and fibre cement. Also used to seal control joints, junctions, penetrations etc.	Sikaflex Pro 310ml tube (GREY)	Supplied by others
	Sealant Bond Breaker tape - used behind sealant to prevent 3-sided bonding	48mm x 3mm x 25m	Supplied by others
	Backing Rod - for sealant backing - used to enable correct filling of joints with sealant. Also used as an air seal at window openings and construction junctions. The diameter of backing rod must be appropriate for the width of the gap being filled. 10mm polyethylene foam bead for use with sealants	10mm diameter x 50m roll	Supplied by others
	Flashings and Cappings - flashings are to be designed and installed in accordance with NZBC E2.		Supplied by others